

Monticello Elementary School

NEWSLETTER



May 17, 2024

1001 Cambridge Place
Tracy, California 95377
Phone: 209.833.9300
Fax: 209.833.9317

Tessa Bunch, Principal
Peggi Johnson, Principal's Secretary
Michelle Zabaldo, Attendance Clerk
www.Jeffersonschooldistrict.com



Good Evening Monticello Families,

We have had a wonderful week at Monticello. It was great to see the Biome play this week performed by Mrs. Davis and Mrs. Marchini's class. Great job! Also, thank you to all of our volunteers for making the play a success, we appreciate all the work you do to support Monticello!

A huge thank you to all of our classroom volunteers! Your support this year has been tremendous! Thank you from the bottom of our hearts!

MJPFA held their final meeting of the year and elected new officers! We look forward to carnival planning as soon as the new year begins! The carnival is scheduled for September 20th, 2024. Please save the date!

Just a reminder that Wednesday, May 29th is a 2 pm dismissal for all students! The last day of school, May 30th, is a minimum day with a 1:30 pm release. We still have yearbooks for sale in the office for \$25 cash, first come first served.

Next Minimum Day is Monday, May 20th.

UPCOMING DATES:

May 27 - No School

May 29 - 2pm release for
ALL STUDENTS

May 30 - Last Day of
School, 1:30pm release

Every Monday:
Minimum Day!
1:30pm Release - All
grades

Tuesday-Friday:
K-3rd Gr. - 2pm release
4th Gr. - 3pm release



REMINDER: If your child is going to be absent for any reason, please email Michelle Zabaldo, Monticello's Attendance Clerk at mzabaldo@jsdtracy.com each day your student is absent.

Tracy Raiders

2024 SEASON

FOOTBALL & CHEER
REGISTRATION



WHAT TO BRING:

- \$100 NON-REFUNDABLE DEPOSIT
- COPY of Birth Certificate
- COPY of Current Report Card
- 2x2 Photo
- Physical

DATES:

—MAY 25TH, SATURDAY 12:00 PM—2:00 PM

LOCATION: WILLIAM LARSEN PARK

—MAY 31ST, FRIDAY 6:00 PM — 8:00 PM

LOCATION: ROUND TABLE PIZZA

2630 S TRACY BLVD. TRACY



PBIS Updates

Attendance (Our goal is 98%):

95.3% School Wide average August-April

Number of Trimester 2 Attendance Awards:

212 students awarded for Awesome Attendance (98%)

PAWS TICKETS SPENT IN THE JAG DEN:

15,422 Tickets

PAWS TRIMESTER AWARDS GIVEN THIS YEAR:

200 students

2024 - 2025 Instructional Calendar

Jefferson School District 2024-2025 Instructional Calendar

JULY				
M	T	W	TH	F
1	2	3	4	5
8	9	10	11	12
15	16	17	18	19
22	23	24	25	26
29	30	31		

OCTOBER				
M	T	W	TH	F
	1	2	3	4
7	8	9	10	11
14*	15	16	17	18
21*	22	23	24	25
28*	29	30	31	

JANUARY				
M	T	W	TH	F
		1	2	3
6*	7	8	9	10
13*	14	15	16	17
20	21	22	23	24
27*	28	29	30	31

APRIL				
M	T	W	TH	F
	1	2	3	4
7*	8	9	10	11
14*	15	16	17	18
21	22	23	24	25
28*	29	30		

AUGUST				
M	T	W	TH	F
5*	6	7	8	9
12*	13	14	15	16
19*	20	21	22	23
26*	27	28	29	30

NOVEMBER				
M	T	W	TH	F
				1
4*	5	6	7	8
11	12	13	14	15
18*	19	20	21	22
25	26	27	28	29

FEBRUARY				
M	T	W	TH	F
3	4	5	6	7
10	11	12	13	14
17	18	19	20	21
24	25	26	27	28

MAY				
M	T	W	TH	F
			1	2
5*	6	7	8	9
12*	13	14	15	16
19*	20	21	22	23
26	27	28	29*	30

SEPTEMBER				
M	T	W	TH	F
2	3	4	5	6
9*	10	11	12	13
16*	17	18	19	20
23	24**	25**	26**	27**
30*				

DECEMBER				
M	T	W	TH	F
2*	3	4	5	6
9*	10	11	12	13
16*	17	18	19	20
23	24	25	26	27
30	31			

MARCH				
M	T	W	TH	F
3*	4	5	6	7
10*	11	12	13	14
17*	18	19	20	21
24*	25	26	27	28
31*				

JUNE				
M	T	W	TH	F
2	3	4	5	6
9	10	11	12	13
16	17	18	19	20
23	24	25	26	27
30				

Total Instructional School Days

August	20
September	19
October	18
November	14
December	15
January	19
February	18
March	16
April	21
May	20
Total	180

Holidays	
Students First Day	
Students Last Day	
Minimum Day (1:30 pm Release)	*
Minimum Day (2 pm Release)	**
Teacher First Day/ Full Day	
Virtual Full Day Keenan	
Teacher Last Day/ Half Day	
End of First/Second Trimester	
P/T Conference (no students)	
Professional Development Day (MOU) (no students)	







Board Approved: February 13, 2024



MAY



2024

Monday	Tuesday	Thursday			Friday
	 Be Kind	1 Chicken Smackers Sunbutter and Jelly Sandwich Assorted Fruit & Vegetables	2 Taco Nada Sunbutter and Jelly Sandwich Assorted Fruit & Vegetables	3 Dominos Cheese Pizza V Sunbutter and Jelly Sandwich Assorted Fruit & Vegetables	
6 Pancake and Turkey Sausage on a Stick Sunbutter and Jelly Sandwich Assorted Fruit & Vegetables	7 Chicken Taquitos Sunbutter and Jelly Sandwich Assorted Fruit & Vegetables	8 Bean & Cheese Burrito V Sunbutter and Jelly Sandwich Assorted Fruit & Vegetables	9  Chicken Patty Sandwich Sunbutter and Jelly Sandwich Assorted Fruit & Vegetables	10 Dominos Cheese Pizza V Sunbutter and Jelly Sandwich Assorted Fruit & Vegetables	
13 Chicken, Cheese and Rice Burrito Sunbutter and Jelly Sandwich Assorted Fruit & Vegetables	14 Grilled Cheese Sandwich V Sunbutter and Jelly Sandwich Assorted Fruit & Vegetables	15 Taco Nada Sunbutter and Jelly Sandwich Assorted Fruit & Vegetables	16  Vegetable Egg Roll Sunbutter and Jelly Sandwich Assorted Fruit & Vegetables	17 Dominos Cheese Pizza V Sunbutter and Jelly Sandwich Assorted Fruit & Vegetables	
20 Pancake and Turkey Sausage on a Stick Sunbutter and Jelly Sandwich Assorted Fruit & Vegetables	21 Grilled Cheese Sandwich V Sunbutter and Jelly Sandwich Assorted Fruit & Vegetables	22 Chicken Smackers Sunbutter and Jelly Sandwich Assorted Fruit & Vegetables	23 Chicken Taquitos Sunbutter and Jelly Sandwich Assorted Fruit & Vegetables	24 Dominos Cheese Pizza V Sunbutter and Jelly Sandwich Assorted Fruit & Vegetables	
27  NO SCHOOL	28 COOKS CHOICE	29 COOKS CHOICE V-Vegetarian	30 COOKS CHOICE	31 Have a great  Summer Vacation!	

The USDA and CDE are equal opportunity providers and employers. Web site: Jeffersonschooldistrict.com
 Visit mymealtime.com to make pre-payments on your childs account or apply for free and reduced meals.

MONTICELLO'S REGULAR DAY SCHEDULE

Warning Bell	8:10 A.M.	All Grades
Instruction Begins	8:15 A.M.	All Grades
Recess	9:25 A.M. ~ 9:39 A.M.	Kinder (Kinder Yard)
Recess	9:40 A.M. ~ 9:54 A.M.	Kinder (Kinder Yard)
Recess	9:45 A.M. ~ 9:59 A.M.	1, 2, SDC (Main Yard)
Recess	10:05 A.M. ~ 10:19 A.M.	3, 4 (Main Yard)
Recess	10:00 A.M. ~ 10:14 A.M.	TK (Kinder Yard)
Lunch	10:50 A.M. ~ 11:10 A.M.	TK
Lunch Recess	11:10 A.M. ~ 11:35 A.M.	TK (Kinder Yard)
Lunch	10:55 A.M. ~ 11:15 A.M.	Kinder
Lunch Recess	11:15 A.M. ~ 11:40 A.M.	Kinder (Big Yard)
Lunch	11:10 A.M. ~ 11:35 A.M.	1st Grade/SDC
Lunch Recess	11:35 A.M. ~ 11:55 A.M.	1st Grade/SDC
Lunch	11:20 A.M. ~ 11:45 A.M.	2nd Grade
Lunch Recess	11:45 A.M. ~ 12:05 P.M.	2nd Grade
Lunch	11:35 A.M. ~ 12:00 P.M.	3rd Grade
Lunch Recess	12:00 P.M. ~ 12:20 P.M.	3rd Grade
Lunch	12:00 P.M. ~ 12:25 P.M.	4th Grade
Lunch Recess	12:25 P.M. ~ 12:45 P.M.	4th Grade
Dismissal	2:00 P.M.	TK ~ 3rd Grade
Dismissal	3:00 P.M.	4th Grade

MONTICELLO'S MINIMUM DAY SCHEDULE (MONDAY)

Warning Bell	8:10 A.M.	All Grades
Instruction Begins	8:15 A.M.	All Grades
Recess	9:25 A.M. ~ 9:39 A.M.	Kinder (Kinder Yard)
Recess	9:40 A.M. ~ 9:54 A.M.	Kinder (Kinder Yard)
Recess	9:45 A.M. ~ 9:59 A.M.	1, 2, SDC (Main Yard)
Recess	10:05 A.M. ~ 10:19 A.M.	3, 4 (Main Yard)
Recess	10:00 A.M. ~ 10:14 A.M.	TK (Kinder Yard)
Lunch	10:50 A.M. ~ 11:10 A.M.	TK
Lunch Recess	11:10 A.M. ~ 11:35 A.M.	TK (Kinder Yard)
Lunch	10:55 A.M. ~ 11:15 A.M.	Kinder
Lunch Recess	11:15 A.M. ~ 11:40 A.M.	Kinder (Big Yard)
Lunch	11:10 A.M. ~ 11:35 A.M.	1st Grade/SDC
Lunch Recess	11:35 A.M. ~ 11:55 A.M.	1st Grade/SDC
Lunch	11:20 A.M. ~ 11:45 A.M.	2nd Grade
Lunch Recess	11:45 A.M. ~ 12:05 P.M.	2nd Grade
Lunch	11:45 A.M. ~ 12:05 P.M.	4th Grade
Lunch Recess	12:05 P.M. ~ 12:30 P.M.	4th Grade
Lunch	12:00 P.M. ~ 12:20 P.M.	3rd Grade
Lunch Recess	12:20 P.M. ~ 12:45 P.M.	3rd Grade
Dismissal	1:30 P.M.	All Grades

PBIS Parent/Family Survey

Please click on the link below if you would like to give us some feedback on how Monticello is implementing Positive Behavior Supports and Interventions.

<https://forms.gle/KhNTaVrywzLsWPRY7>

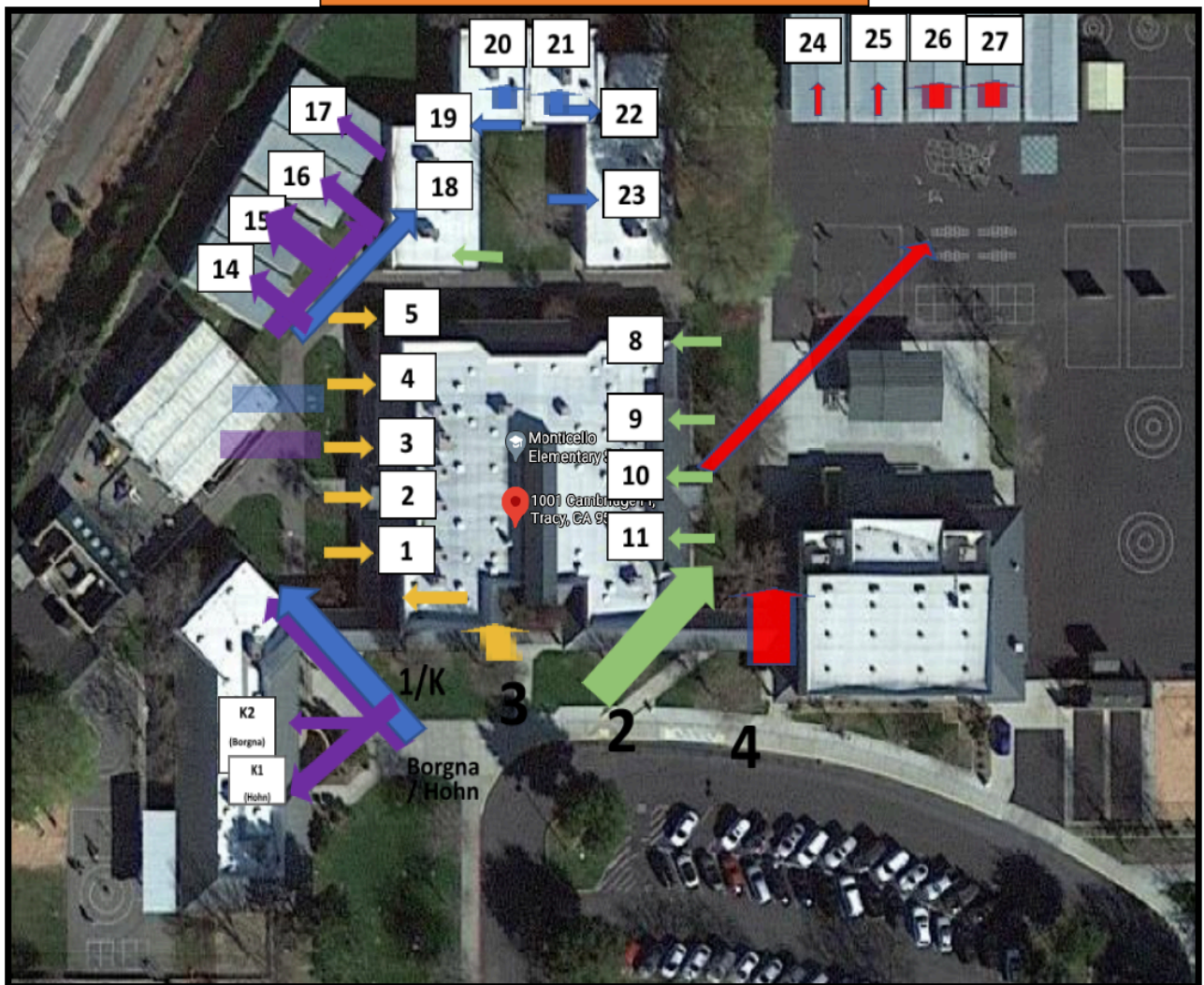


2023-2024 ASB Activity Calendar

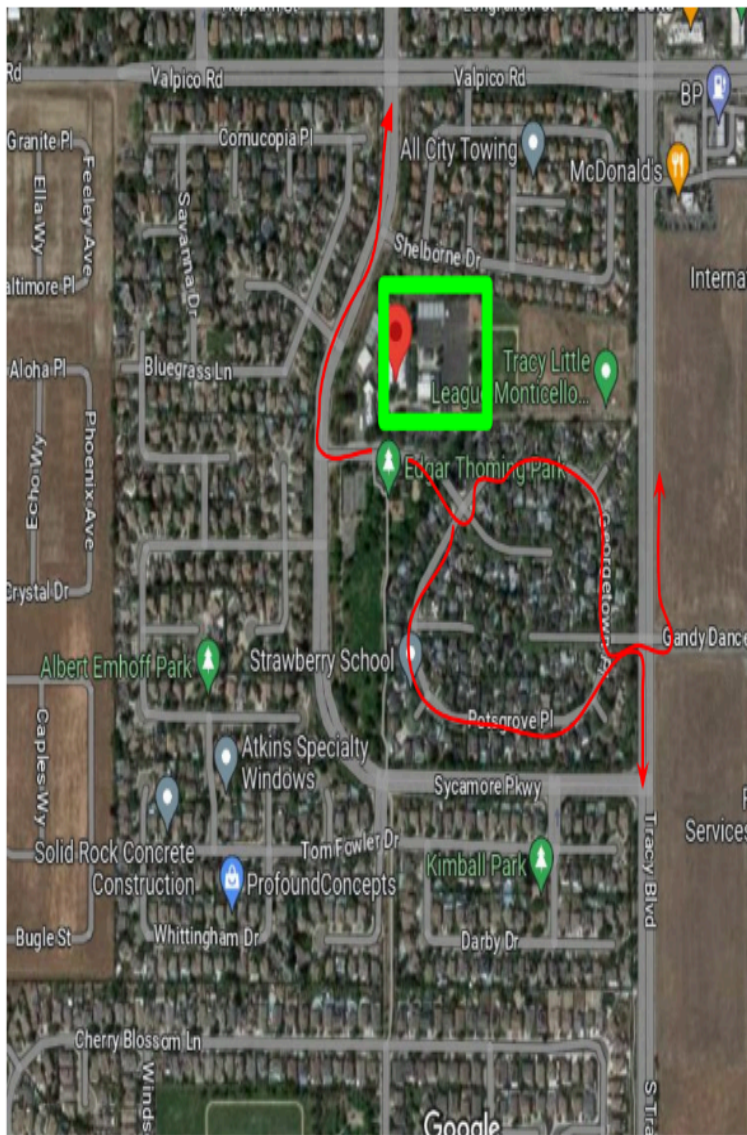
April 2024							May 2024						
S	M	T	W	T	F	S	S	M	T	W	T	F	S
	1	2	3	4	★ 5	6				1	2	🐾 3	4
7	8	9	10	11	🐾 12	13	5	6	7	8	9	🐾 10	11
14	15	16	17	18	🐾 19	20	12	13	14	15	16	🐾 17	18
21	★ 22	23	24	25	🐾 26	27	19	20	21	22	23	★ 24	25
28	29	30					26	27	28	29	★ 30	31	
APRIL NOTABLES							MAY NOTABLES						
4/5 - Autism Awareness Day - Wear Blue							5/24 - Red, White, & Blue Day						
4/22 - Earth Day - Wear Green and							5/30 - Last Day of School - Hawaiian Day						
Pick Up Trash with Jaggy													



STUDENT DROP-OFF INFORMATION



Please see the information below that corresponds with this map.



Traffic reminders:

- Please remain in your vehicle for drop off and pick up.
- Students should be ready to exit the vehicle as soon and as you enter the driveway
- When exiting onto Cambridge from the school parking lot or the park parking lot, please exit left or right. Please exit whichever way has less traffic to continue to move the traffic line.
- No U-turns at anytime
- The neighborhood next to Monticello is a circle and will lead you to Tracy Blvd. Drivers can make a left on Tracy Blvd to get to Valpico Rd. or a right on Tracy Blvd to get to Linne Rd. Please utilize this exit as traffic allows
- Drivers should make a right on Sycamore Parkway during heavy traffic times.



Absences Add up!

#SCHOOLEVERYDAY

Missing just 2 days a month
means a child misses 10% of the
school year.



RUPERT GANZER

Jefferson School District
2023 - 2024 Instructional Calendar

JULY				
M	T	W	TH	F
3	4	5	6	7
10	11	12	13	14
17	18	19	20	21
24	25	26	27	28
31				

AUGUST				
M	T	W	TH	F
	1	2	3	4
7*	8	9	10	11
14*	15	16	17	18
21*	22	23	24	25
28*	29	30	31	

SEPTEMBER				
M	T	W	TH	F
				1
4	5	6	7	8
11*	12	13	14	15
18*	19	20	21	22
25	26**	27**	28**	29**

OCTOBER				
M	T	W	TH	F
2*	3	4	5	6
9	10	11	12	13
16*	17	18	19	20
23*	24	25	26	27
30*	31			

NOVEMBER				
M	T	W	TH	F
		1	2	3
6*	7	8	9	10
13*	14	15	16	17
20	21	22	23	24
27*	28	29	30	

DECEMBER				
M	T	W	TH	F
				1
4*	5	6	7	8
11*	12	13	14	15
18	19	20*	21	22
25	26	27	28	29

JANUARY				
M	T	W	TH	F
1	2	3	4	5
8*	9	10	11	12
15	16	17	18	13
22*	23	24	25	26
29*	30	31		

FEBRUARY				
M	T	W	TH	F
			1	2
5*	6	7	8	9
12*	13	14	15	16
19	20	21	22	23
26*	27	28	29	

MARCH				
M	T	W	TH	F
				1
4*	5	6	7	8
11	12	13	14	15
18*	19	20	21	22
25*	26	27	28	29

APRIL				
M	T	W	TH	F
1	2	3	4	5
8*	9	10	11	12
15*	16	17	18	13
22*	23	24	25	26
29*	30			

MAY				
M	T	W	TH	F
		1	2	3
6*	7	8	9	10
13*	14	15	16	17
20*	21	22	23	24
27	28	29	30*	31

JUNE				
M	T	W	TH	F
3	4	5	6	7
10	11	12	13	14
17	18	19	20	21
24	25	26	27	28

Total Instructional School Days	
August	19
September	19
October	17
November	16
December	14
January	19
February	19
March	15
April	21
May	21
Total	180

Holidays	
Students First Day	
Students Last Day	
Minimum Day (1:30 pm Release)	*
Minimum Day (2 pm Release)	**
Teachers First/Last Work Day	
Teachers First/Last Work Day	
End of First/Second Trimester	
P/T Conference (no students)	
Professional Development Day (MOU) (no students)	

JUST A FRIENDLY REMINDER THAT NO DOGS ARE ALLOWED ON CAMPUS.

